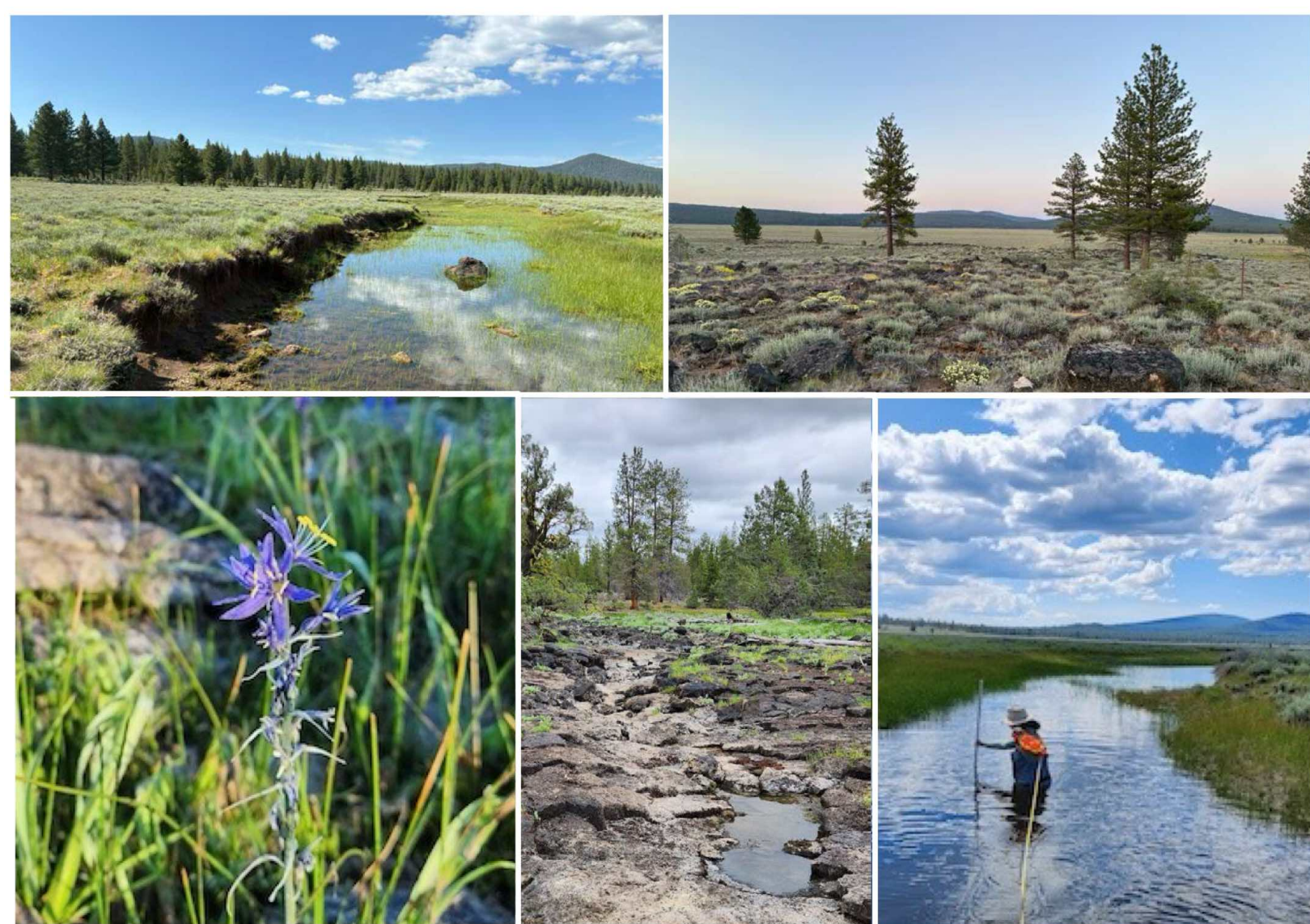


Eagle Lake Rainbow Trout Science-Based Habitat Restoration in Pine Creek



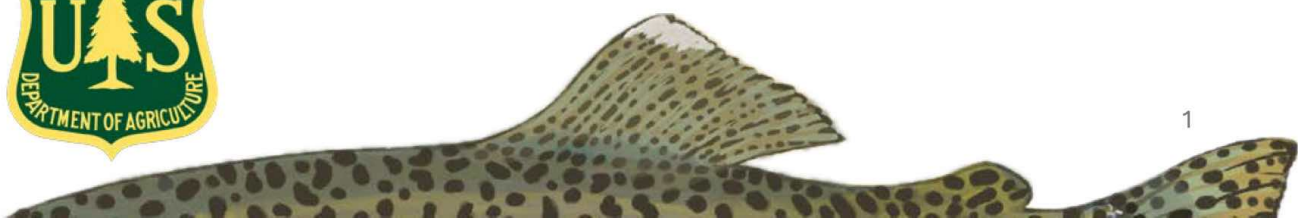
RESTORATION, SCIENCE AND MONITORING OVERVIEW AND UPDATE



A shared vision for improving hydrologic and habitat conditions to promote endemic fish recovery in the Pine Creek Watershed.

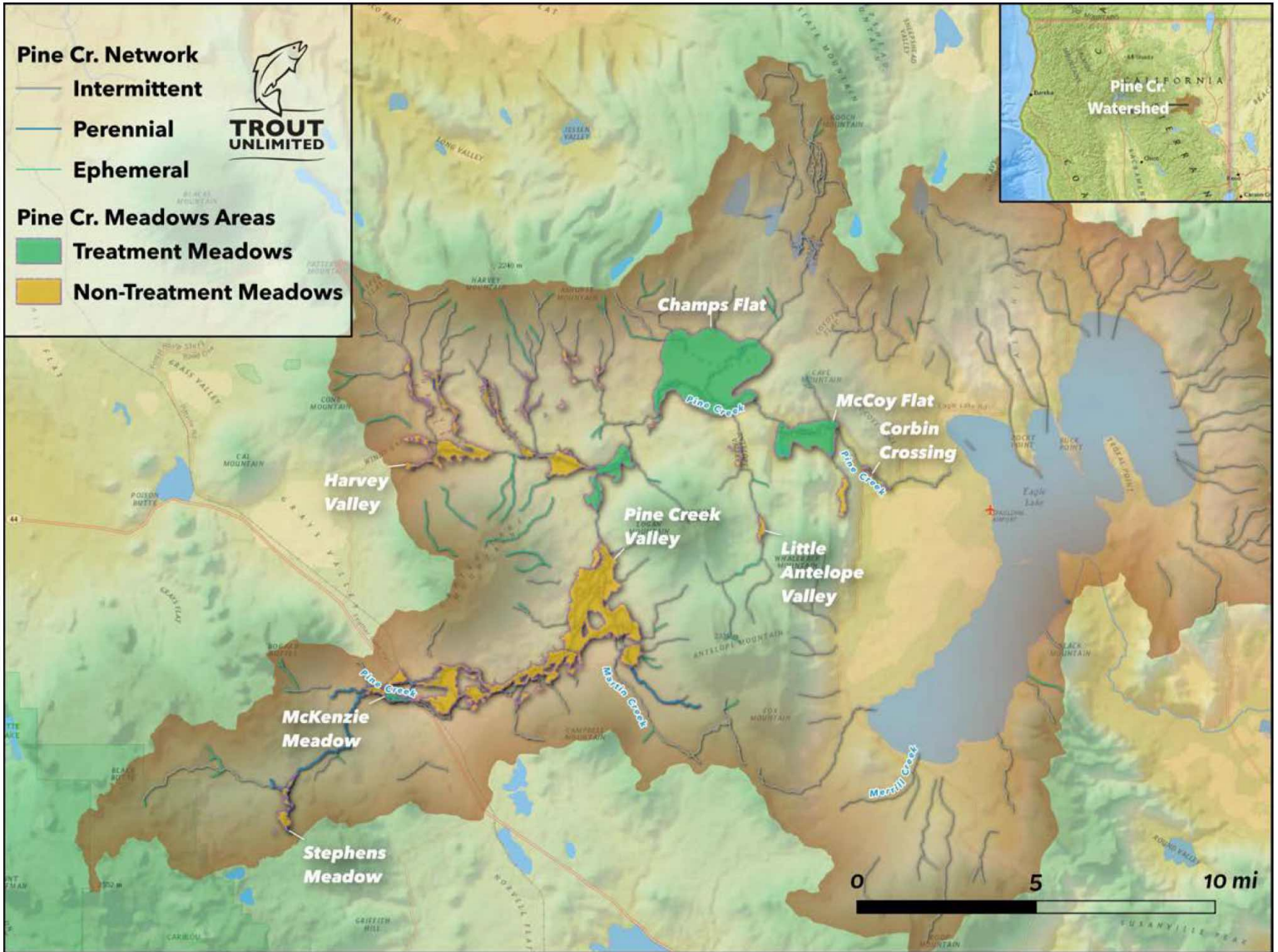


January 2026



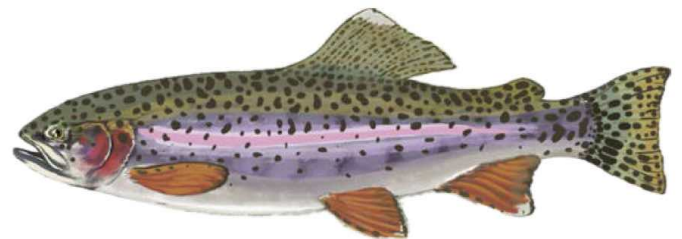
Pine Creek and Eagle Lake Rainbows

VITAL STRONGHOLD FOR AN ENDEMIC CALIFORNIA SPECIES



Restoring Habitat Components Critical for Eagle Lake Rainbow Life-Histories

Eagle Lake Rainbow Trout (ELRT), an endemic species found exclusively in California, exhibit remarkable adaptability to the challenging environment of the Eagle Lake basin. Over the past century, habitat degradation has severely hindered the life-history and natural reproduction of this population. More recently, progressive management and restoration actions focused meadow hydrology within Pine Creek are being pursued to restore the critical habitat on which the life-history of this population depends.



EAGLE LAKE RAINBOW TROUT

Oncorhynchus mykiss aquilarum

Science & Monitoring Overview

Restoration actions, scientific understanding, and ecosystem resiliency modeling within Pine Creek and Eagle Lake

1. RESTORATION MONITORING – TROUT UNLIMITED

EFFECTIVENESS MONITORING OF PINE CREEK RESTORATION GOALS



Goal 1: Restore Meadow Hydrogeomorphic Function
Floodplain connectivity, channel stability and sinuosity, surface water persistence, groundwater elevation

Goal 2: Improve Meadow and Aquatic Habitat
Vegetation cover, channel complexity, vegetation abundance, diversity, and availability

Goal 3: Increase Ecosystem Resilience
Drought resistance and wildfire resistance, soil carbon storage, range condition and grazing resiliency

2. UNDERSTANDING EAGLE LAKE & EAGLE LAKE RAINBOW TROUT - UNR LIMNOLOGY, POPULATION DYNAMICS, AND INVASIVE SPECIES INTERACTIONS

Goal 1: Understand Eagle Lake Limnologic Condition
Evaluate how current condition compares to historic conditions with implications for ELRT population dynamics.

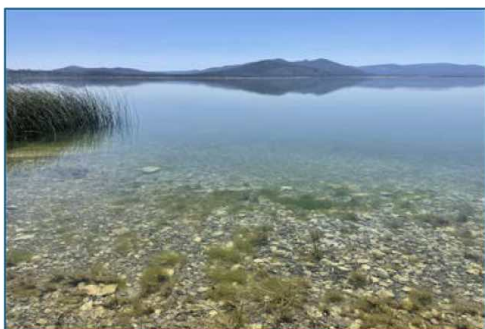
Goal 2: Understand ELRT Population Dynamics
Quantify the abundance, distribution, size and health of fishes across Eagle Lake including the three different lake basins by season.

Goal 3: Understand Invasive Brook Trout Interaction
Evaluate distribution and abundance of invasive brook trout within Pine Creek.



3. MODELING HISTORIC, CURRENT, AND FUTURE CONDITIONS - UNR

INTEGRATING ADVANCED HYDROLOGIC AND LAND-USE MODELLING TO UNDERSTAND PINE CREEK



SWAT+: Soil and Water Assessment Tool Plus
Investigate how land-use impacts within Pine Creek have influenced hydrology and ultimately Eagle Lake Rainbow Trout habitat and life-history.

RHESSys: Regional Hydro-Ecologic Simulation System
Modelling how forest management and climate scenarios influence vegetation dynamics, nutrient cycling, and hydrology within Pine Creek.

1. RESTORATION MONITORING

EFFECTIVENESS MONITORING OF MEADOW & STREAM RESTORATION



Photo of Champs Flat captured May 2025 showing the entrenched state of the current primary channel that is completely disconnected from the extensive meadow surfaces.

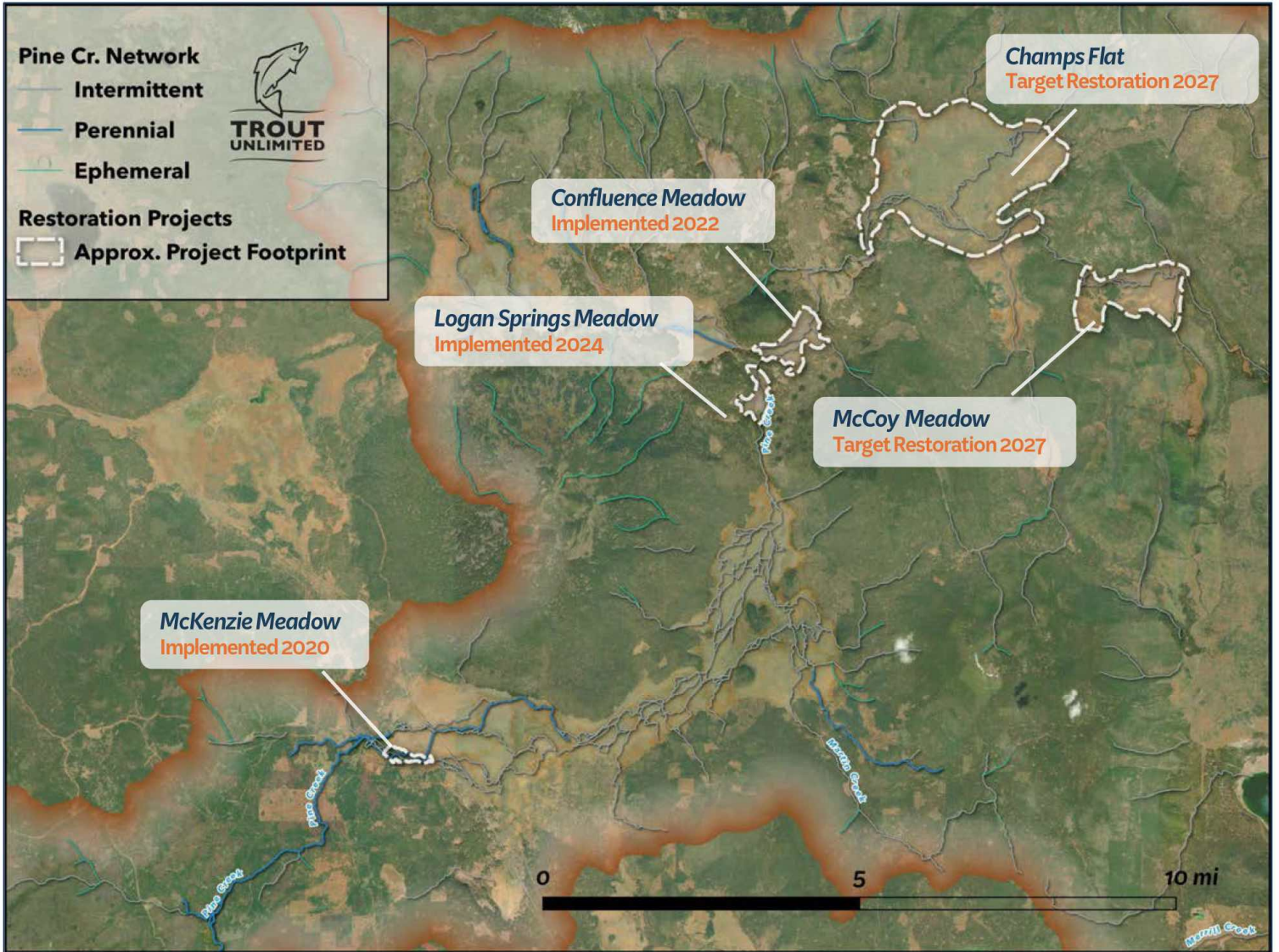
PINE CREEK RESTORATION MONITORING GOALS, OBJECTIVES, INDICATORS

Effectiveness monitoring as part of Pine Creek meadow restoration actions aims to quantify indicators that are linked to restoration goals and objectives. The monitoring methods follow those outlined by the Sierra Meadows Wetland and Riparian Area Monitoring Plan (SM-WRAMP).

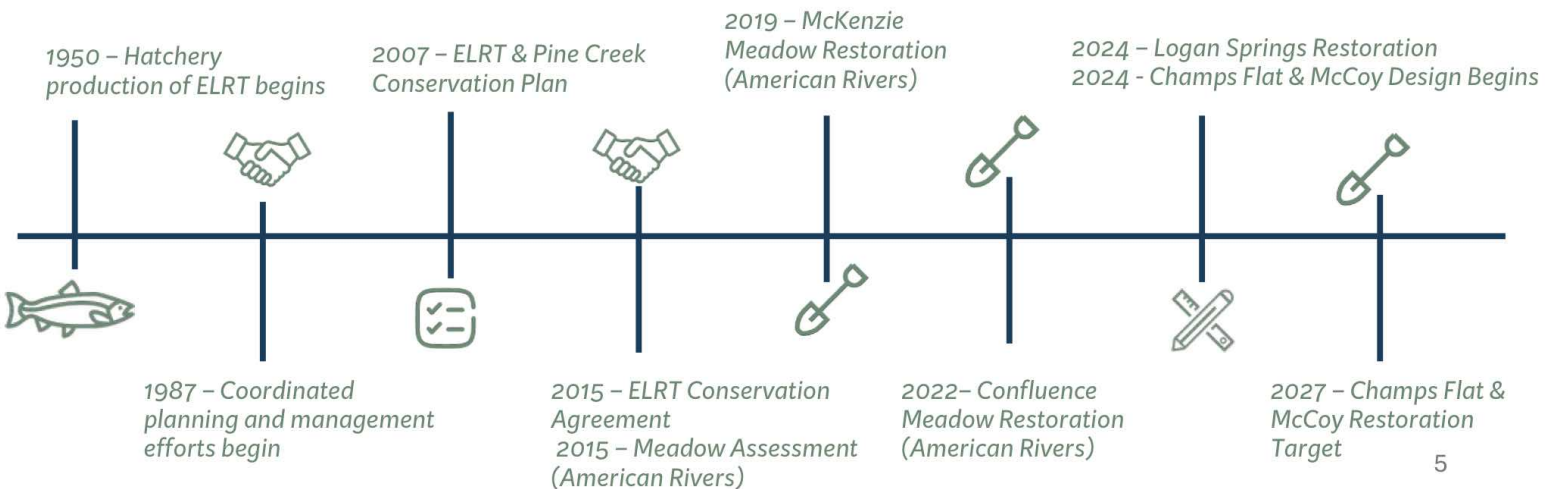
Goal	Objectives	Indicators
Goal 1 : Restore hydrogeomorphic meadow function	Obj. 1a: Increase floodplain connectivity Obj. 1b: Decrease channel depth and width Obj. 1c: Decrease erosion Obj. 1d: Increase channel sinuosity and length Obj. 1e: Increase surface water availability	Depth to groundwater, surface flow extent and duration, vegetation greenness, channel dimensions, bank stability, channel length and sinuosity
Goal 2 : Improve aquatic and meadow habitat function	Obj. 2a: Improve channel habitat quality Obj. 2b: Increase wet vegetation extent and diversity Obj. 2c: Improve terrestrial wildlife habitat Obj. 2d: Increase ELRBT habitat quality.	Channel unit diversity, wetland vegetation extent, wetland vegetation diversity, invasive plant extent, conifer distributions, remote vegetation NDVI, bird species diversity
Goal 3 : Increase resiliency to natural disturbance and change	Obj. 3a: Increase drought and wildfire resiliency Obj. 3b: Increase soil carbon content and storage Obj. 3c: Increase soil erosion resistance Obj. 3d: Allow flexibility in grazing practices	Remote vegetation NDVI, soil carbon content, soil saturation, stubble height

Pine Creek Meadow Restoration

PROJECT AREAS AND RESTORATION ACTION TIMELINE



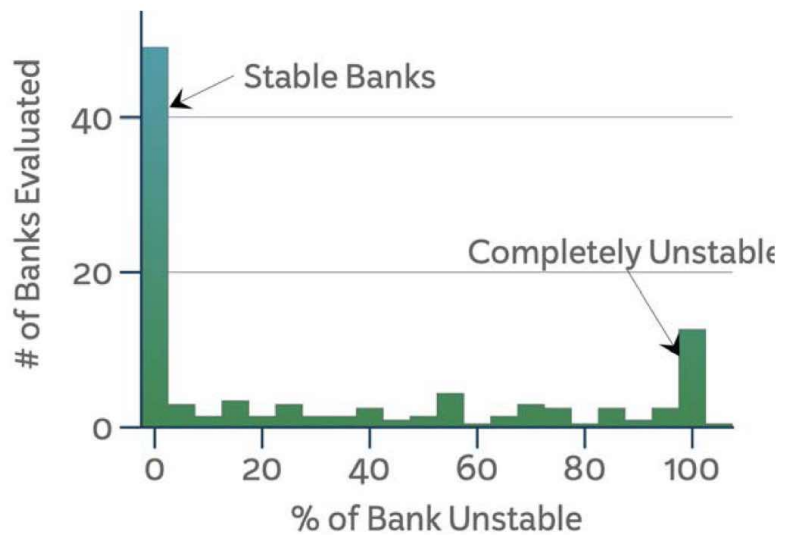
TIMELINE OF ACTIONS TOWARDS MEADOW AND HYDROLOGIC RESTORATION IN PINE CREEK



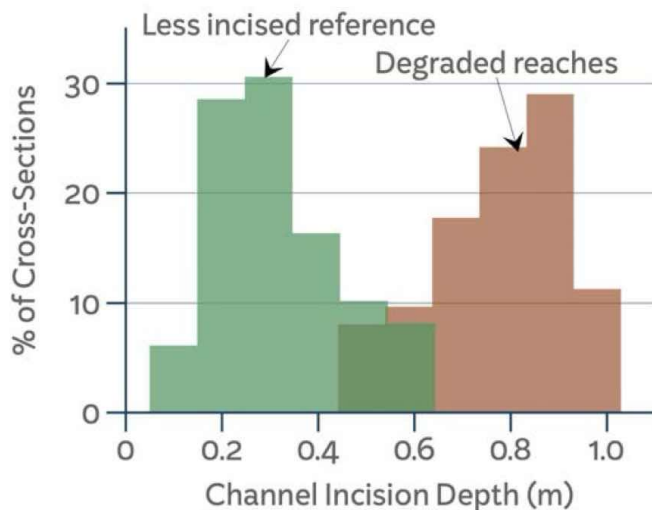
Stream Condition & Habitat Inventory

CHANNEL DIMENSIONS AND FISH HABITAT QUANTITY AND QUALITY

What	On-the-ground surveys of geomorphic feature dimensions, channel habitat units, bank condition, and structural elements using USFS-derived Stream Condition Inventory (SCI) Habitat Monitoring Protocols.
Who	TU monitoring and restoration scientists and contracted meadow and fish ecologists.
Where	Survey reaches have been distributed throughout treatment and control areas in Logan Springs, Champs Flat, and McCoy Meadows.
When	Pre-restoration surveys as follows: Logan Springs - 2017; Champs Flat: 2024 and 2025; McCoy: 2023.



Field surveys using the stream condition inventory (SCI) methods will track the trajectory of a number of channel condition characteristics that are linked to restoration goals and objectives including bank stability and incision depth.

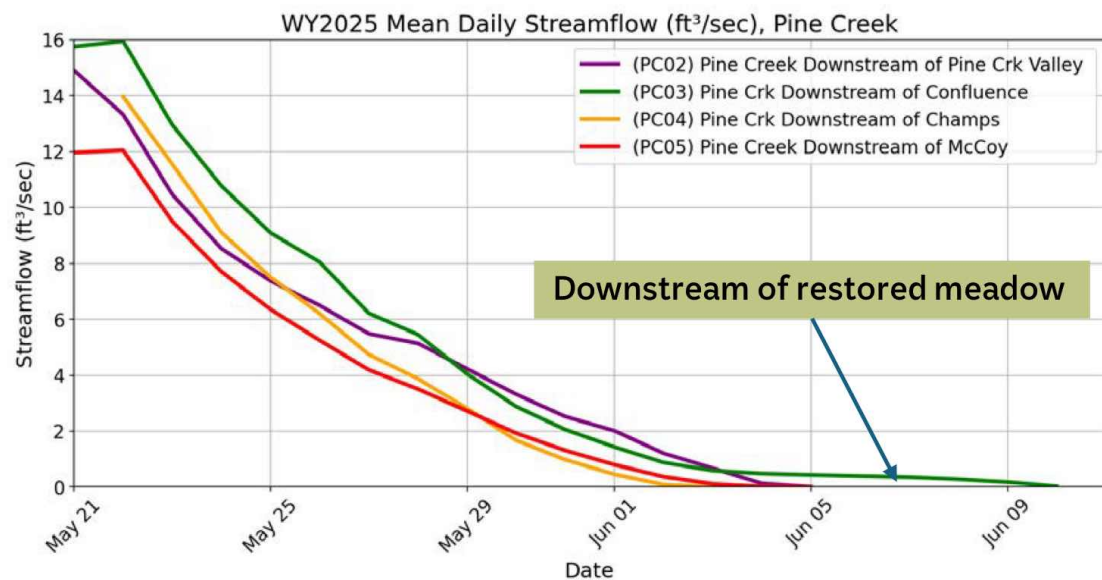
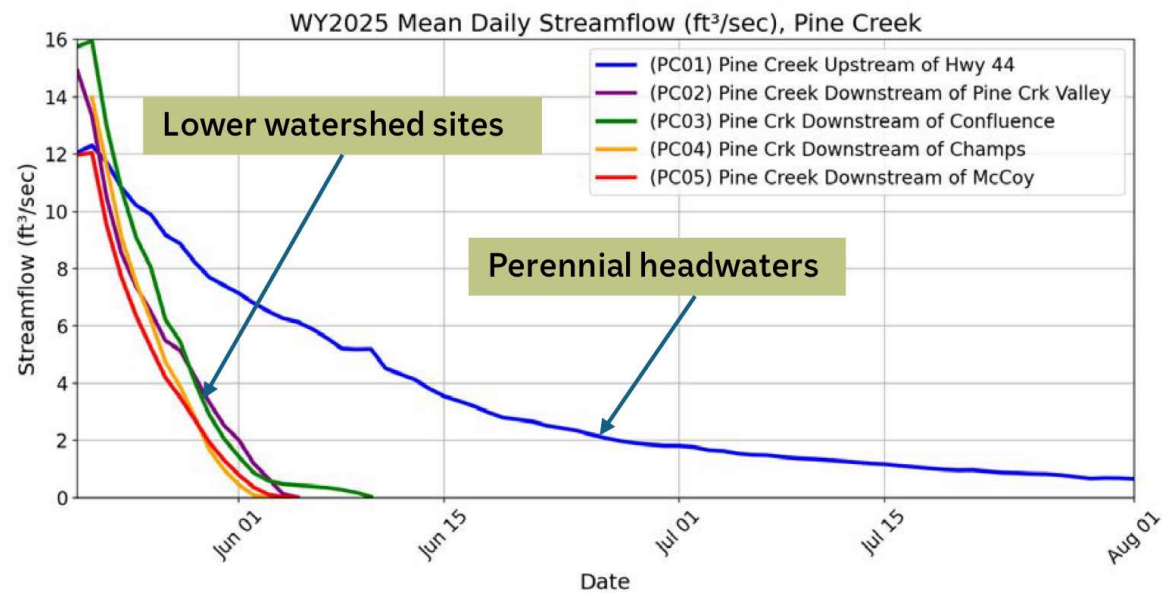


Reversing incision depth is a primary goal of the restoration actions. Pre-restoration survey cross-sections can directly describe channel incision depths and will be a key indicator of restoration effectiveness within Champs Flat.

Hydrology – Stream Discharge

SURFACE FLOW DISCHARGE AND DURATION WITHIN PINE CREEK

What	Streamflow gages at 8 locations throughout the watershed, reporting 15-minute stream discharge and temperature data.
Who	TU monitoring and restoration scientists in collaboration with Honey Lake RCD.
Where	Streamflow monitoring in the upper watershed (near Bogard Springs), downstream of Pine Creek Valley, downstream of Confluence Meadow, upstream and downstream of Champs Flat and McCoy meadows, and near the Eagle Lake confluence (at the fish trap).
When	5 gages installed in October 2024, and 3 more in 2025. Data collection efforts focus on base flows. Gages will remain in place for approximately 5 years post-restoration of Champs Flat and McCoy Meadows.

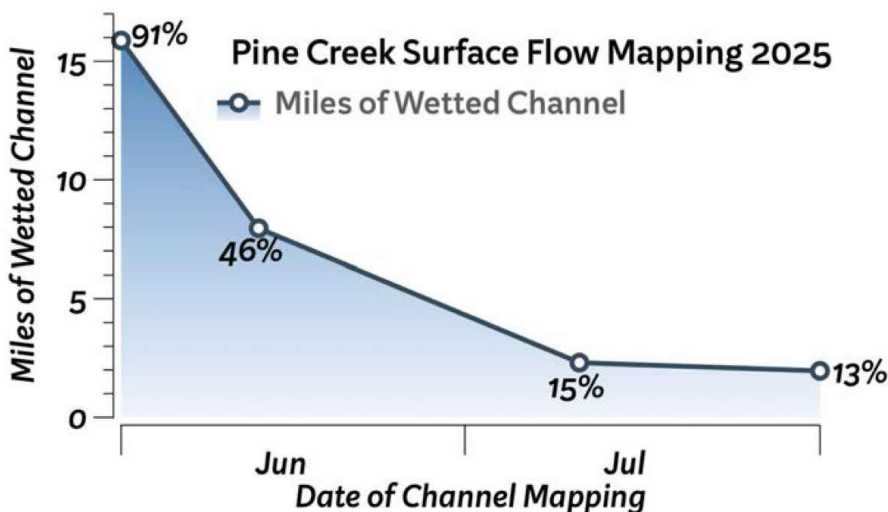
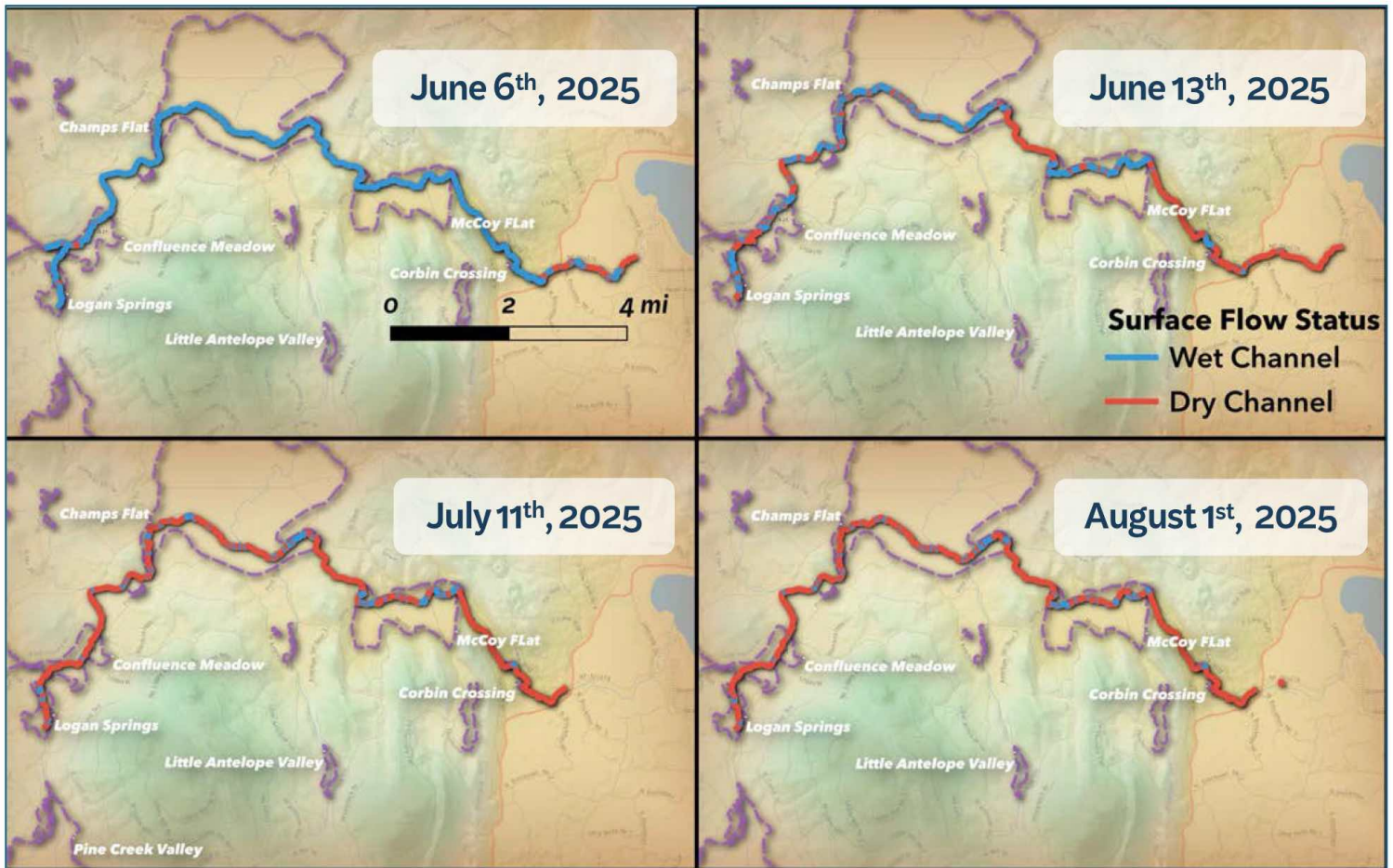


Streamflow gage characterize the upper perennial upper watershed and lower watershed meadows. In 2025, most lower watershed sites went dry between June 3rd and June 5th, with the exception of PC03 (downstream of Confluence); a small amount of flow was observed below this restored meadow until June 10th.

Hydrology – Surface Water Mapping

SURFACE FLOW PERSISTENCE AND DISTRIBUTION IN PINE CREEK

What	Field-based mapping of surface flow presence, persistence, and distribution throughout the mainstem of Pine Creek.
Who	TU monitoring and restoration scientists in collaboration with Honey Lake RCD.
Where	Pine Creek, from the confluence with Eagle Lake upstream to Logan Springs Meadow.
When	Roughly every two weeks from late Spring through early Summer in 2024 and 2025.



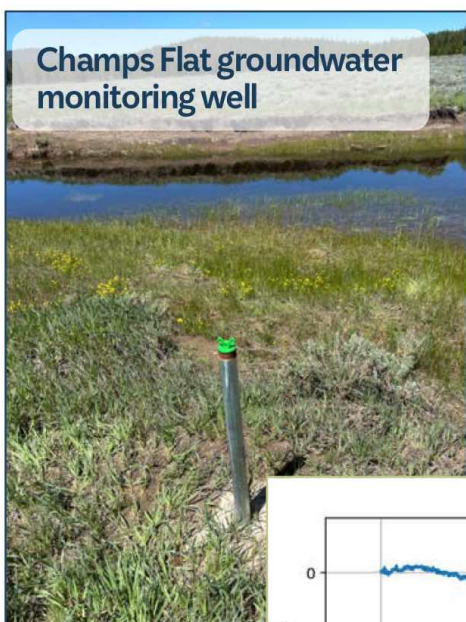
By August 1st only 13% of the main channel in Pine Creek contains surface water.

Surface water presence mapping focuses on approximately 16 miles of Pine Creek above (West) of Eagle Lake. The survey area encompasses restoration locations within Logan Springs, Confluence, Champs Flat, and McCoy Flat.

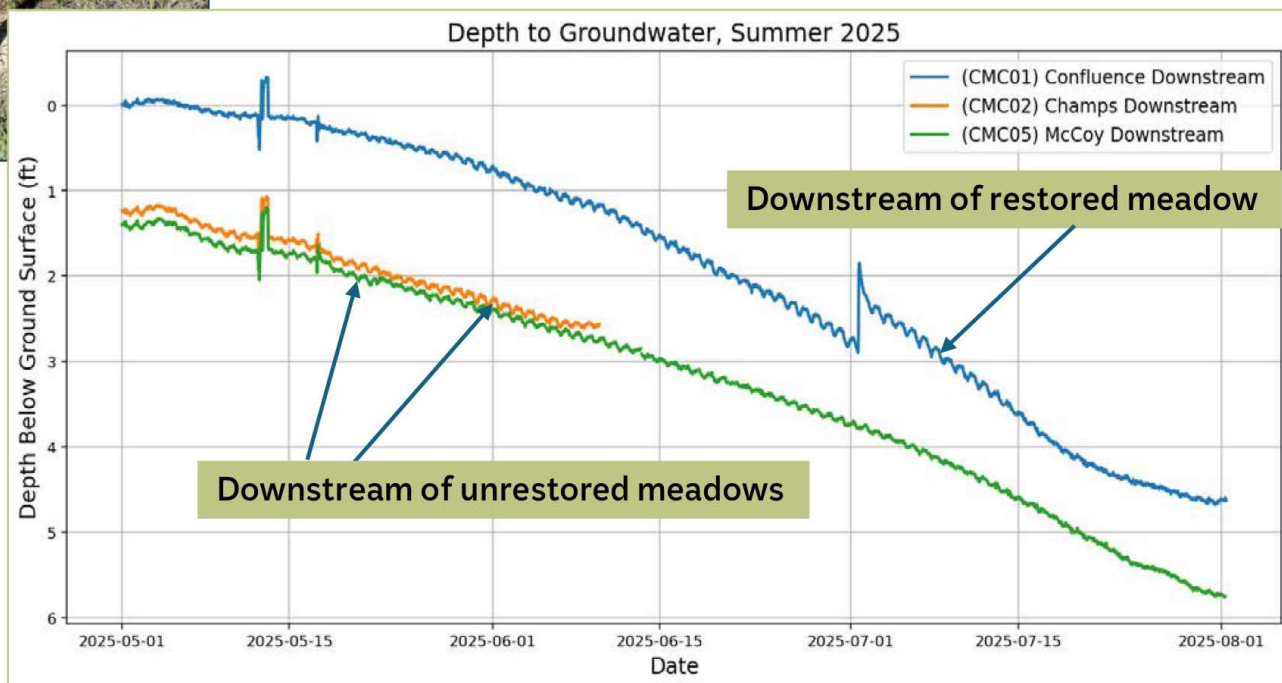
Hydrology – Groundwater Elevation

PIEZOMETRIC MONITORING OF DEPTH TO GROUNDWATER

What	Continuous piezometric monitoring of pre- and post restoration shallow groundwater elevation.
Who	TU monitoring and restoration scientists in collaboration with Honey Lake Valley RCD and American Rivers.
Where	Piezometers are coupled with streamflow gages at the downstream end of Confluence, Champs, and McCoy meadows, and configured in cross-sections in Champs and McCoy meadows.
When	Five piezometers were installed in Confluence, Champs, and McCoy meadows in October of 2024, and ten additional piezometers were installed in Champs in July 2025.



Groundwater elevation monitoring is demonstrating how Pine Creek meadow restoration treatments at increasing groundwater elevations and soil saturation.



Hourly groundwater data reveals that while the overall water table levels drop significantly in early summer, they remain considerably higher downstream of Confluence Meadow, which underwent restoration in 2022. A notable spike in groundwater elevation (and stream stage) occurred due to a thunderstorm in early July, specifically downstream of Confluence, but not at other locations. This suggests that precipitation may be attenuated in restored meadows.

Hydrology – Champs Groundwater

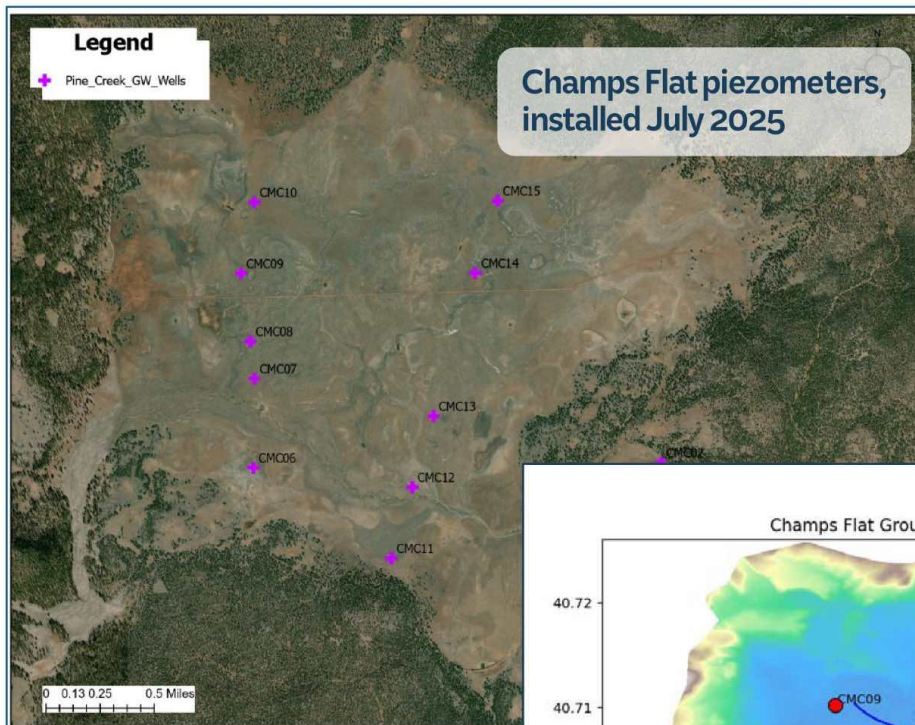
PIEZOMETRIC MONITORING OF DEPTH TO GROUNDWATER

What Continuous monitoring of pre- and post-restoration shallow groundwater level in a denser array in Champs Flat Meadow.

Who TU monitoring and restoration scientists in collaboration with Honey Lake Valley RCD.

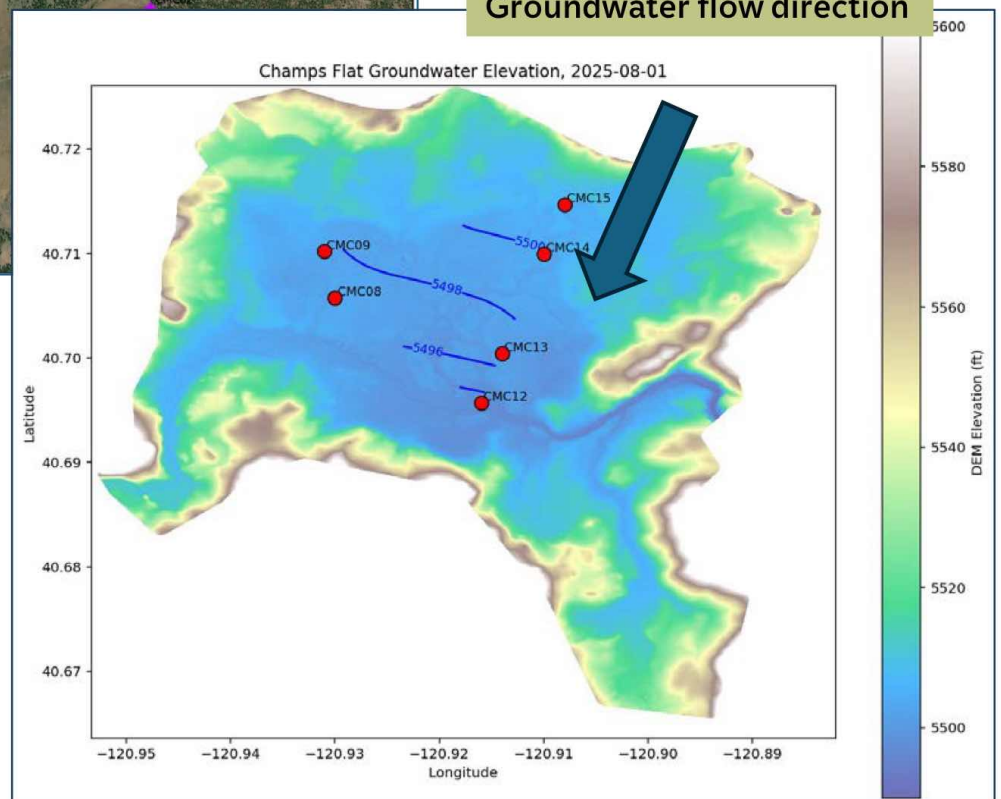
Where Ten piezometers placed in transects in Champs Flat meadow.

When Piezometers were installed in Champs Flat in July 2025. Each is instrumented with a sensor to record continuous hourly groundwater level data.



Ten piezometers were installed in two transects across Champs Flat meadow.

Groundwater flow direction

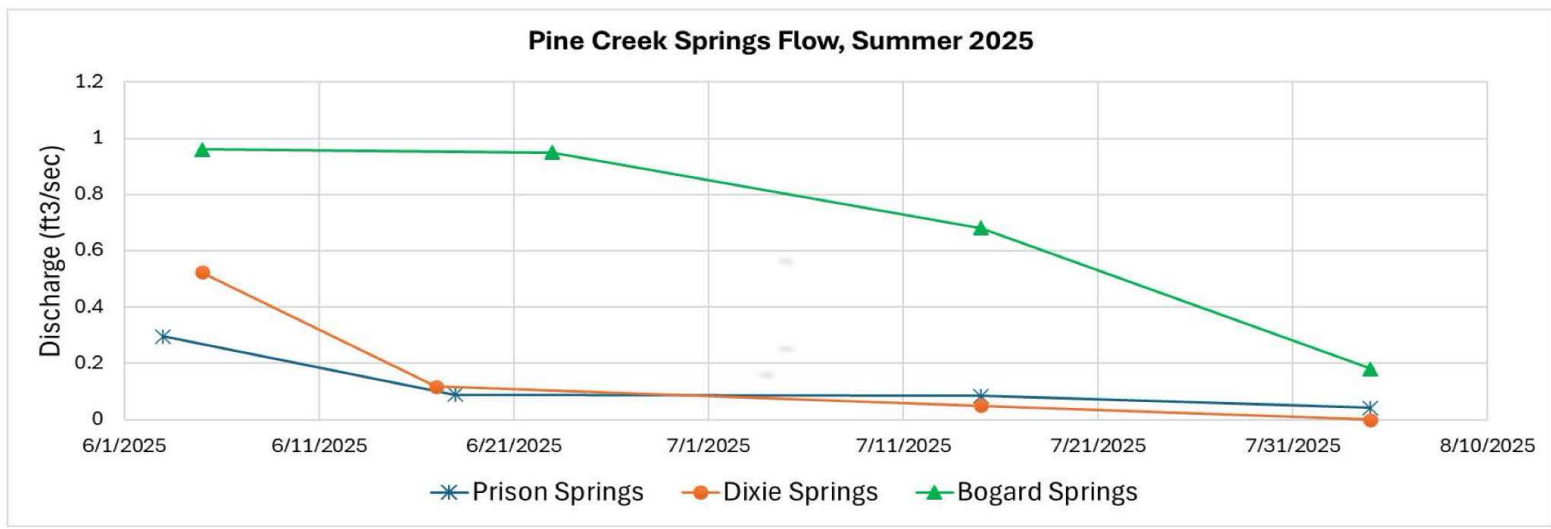
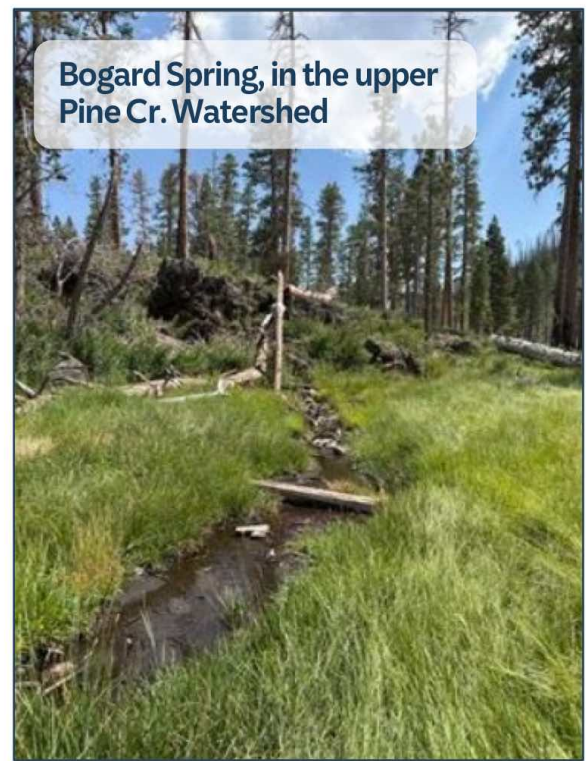
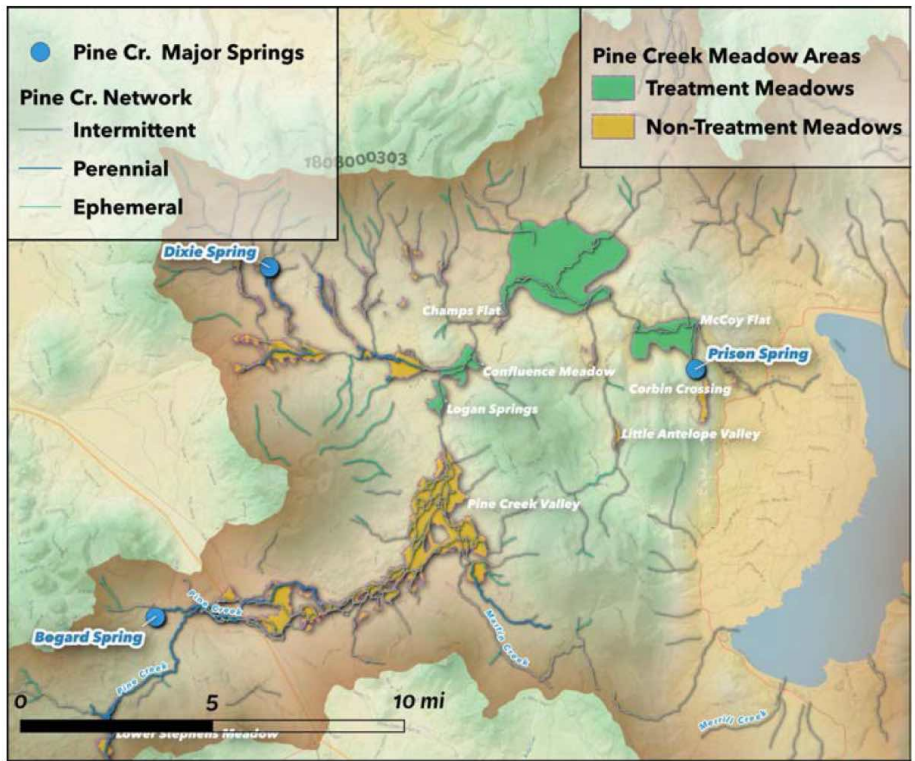


Preliminary data can be used to draw groundwater elevation contours for August 1, 2025, indicating groundwater flowing generally from north to south towards the channel. Some wells were dry at the time of installation, and only wetted wells were used for analysis. Future data will allow for comparison of elevation and flow paths over time.

Hydrology – Major Surface Springs

CONTRIBUTION AND DYNAMICS OF SURFACE SPRINGS

What	Discharge monitoring in major springs that contribute to Pine Creek.
Who	TU monitoring and restoration scientists in collaboration with Honey Lake Valley RCD
Where	Major surface springs in the Pine Creek system including Prison, Bogard and Dixie Springs
When	Discharge was measured at four dates in each spring in summer of 2025



Discharge for major surface springs in the Pine Cr watershed measured during Summer 2025. Bogard Springs, located higher in the Pine Creek watershed maintains greater surface flow than Prison and Dixie Springs, which are lower in the watershed.

Hydrology – Stream Temperature

WATER TEMPERATURE MONITORING FOR FISH HABITAT SUITABILITY

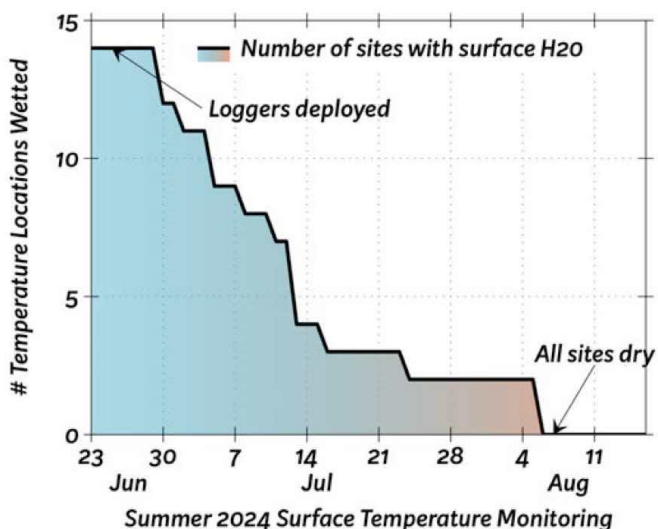
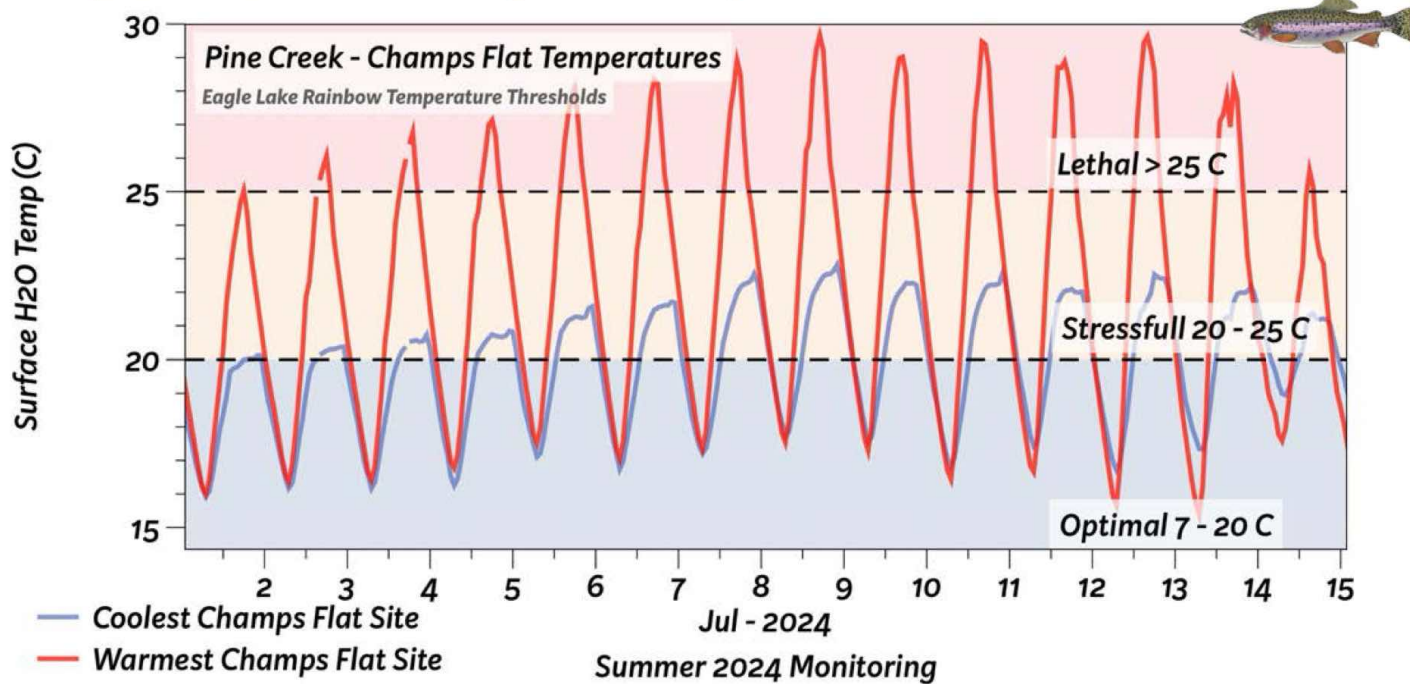
What Surface water temperature collected in hourly intervals.

Who TU monitoring and restoration scientists in collaboration with Honey Lake RCD.

Where 24 loggers placed longitudinally throughout Logan Springs, Champs Flat and McCoy meadows.

When Temperature monitoring began in Summer 2024. Continuous temperature data is collected year-round.

Daily temperature data from a cool and warmer monitoring site within Champs Flat (below). These temperature ranges demonstrate that even mid-summer surface water may offer temperature refugia for rearing or stranded adult Eagle Lake Rainbow Trout within the greater meadow systems.



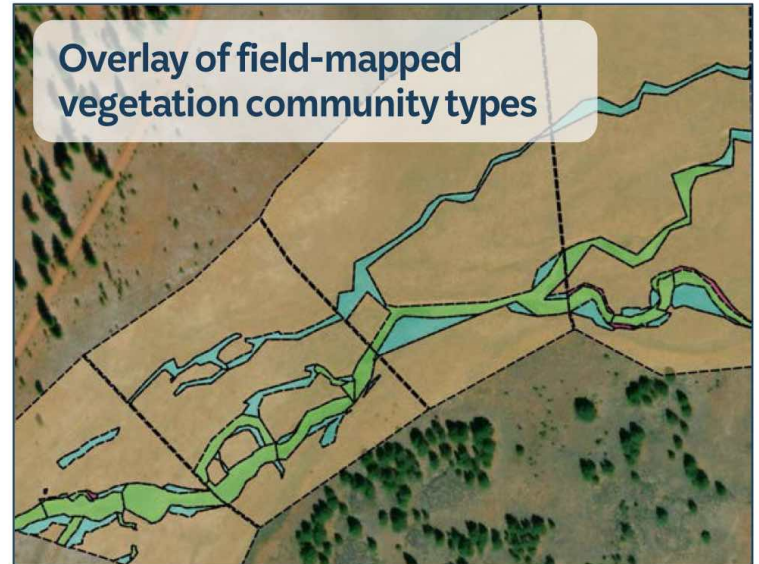
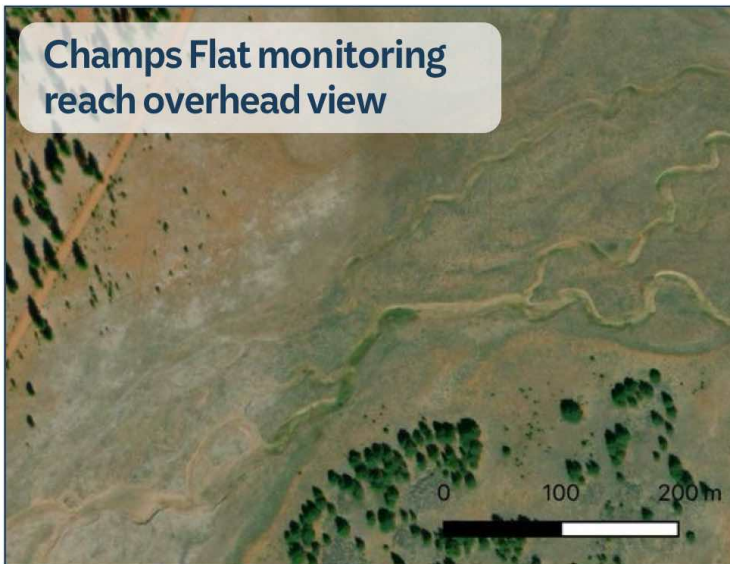
Disconnected deep pools may offer summer temperature refugia for adult and rearing juvenile ELRT

Of the 14 temperature monitoring locations all of them became dry by early august (left). This monitoring provides insight into the date that surface water is diminishing throughout the system each year.

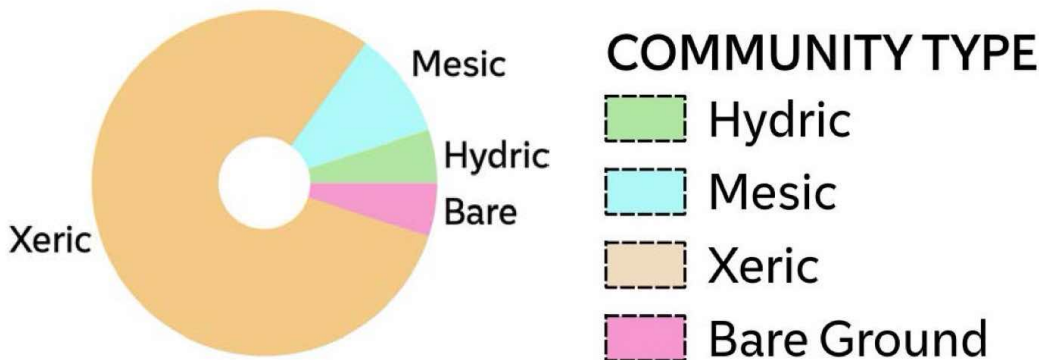
Vegetation - Community Mapping

FIELD MAPPING VEGETATION COMMUNITY COMPOSITION AND EXTENT

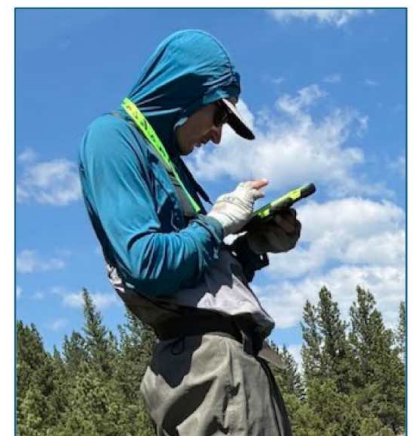
What	Field-mapping of dominant vegetation types for both ground and overstory cover.
Who	TU monitoring and restoration scientists and contracted botanists.
Where	Field-mapping is completed at SCI survey reaches that are distributed throughout treatment and control areas in Champs Flat and McCoy meadows.
When	Pre-restoration surveys as follows: Champs Flat: 2025; McCoy: Scheduled 2026. Mapping will be repeated following restoration treatments expected to occur in 2027.



Mapping dominant vegetation community before restoration will track the shift in meadow composition that is expected from restoration treatments designed to enhance floodplain connectivity and decrease groundwater depth.



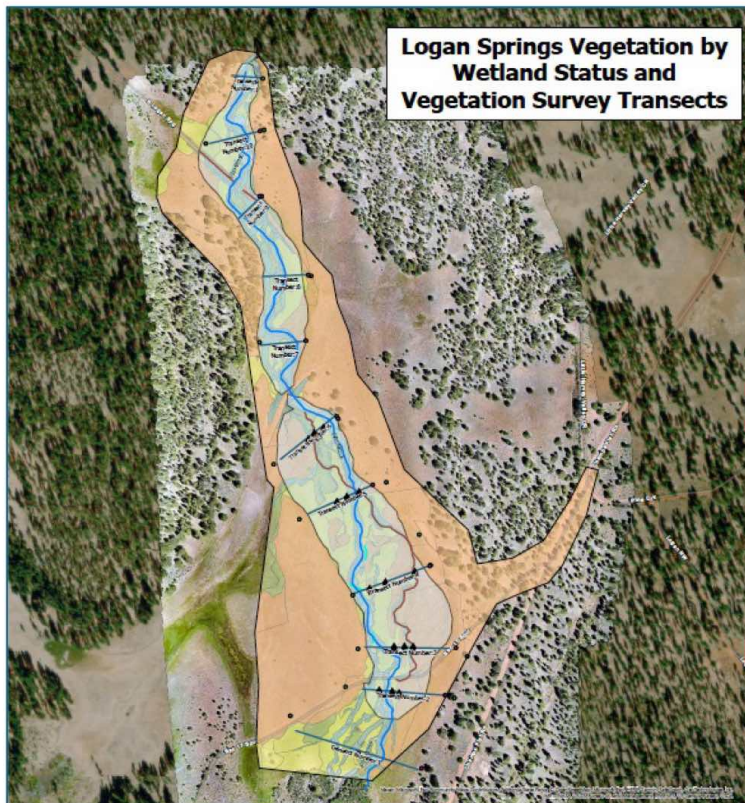
Pre-restoration mapping conducted in 2025 revealed a predominantly xeric plant community, with only thin bands of mesic and hydric vegetation situated near the existing incised channel.



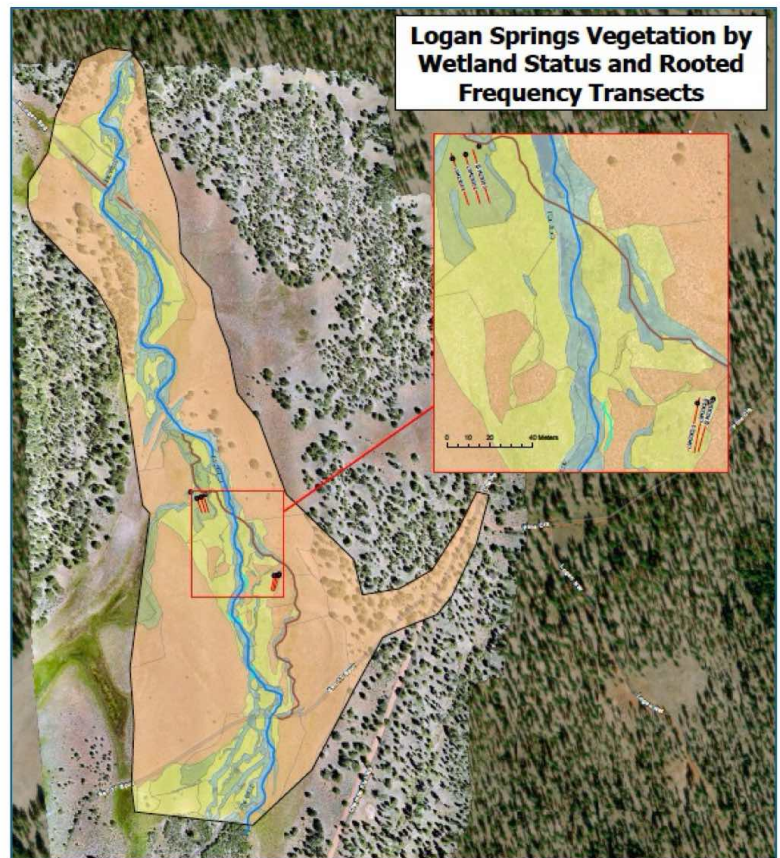
Vegetation - Response to Restoration

QUANTIFYING CHANGE IN WETLAND VEGETATION COMMUNITIES

What	SM-WRAMP (Sierra Meadows Wetlands & Riparian Area Monitoring Plan) - General Vegetation & Rooted Frequency Protocols (USFS-derived).
Who	TU contracted botanist, Catherine Schnurrenberger.
Where	Logan Springs, Champs Flat and McCoy Meadows.
When	Pre-restoration surveys as follows: Logan Springs – 2023 and 2024; Champs Flat and McCoy: 2026.

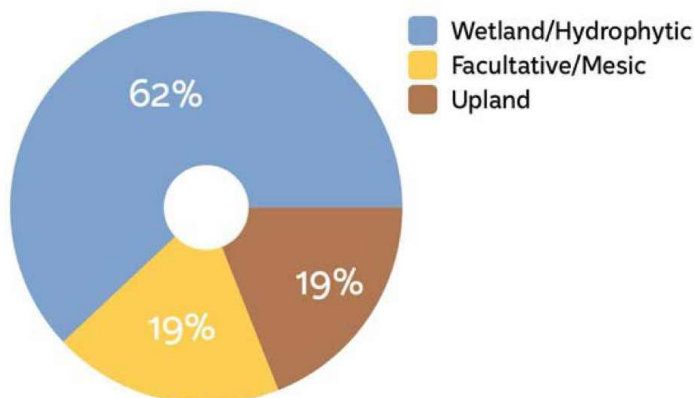


SM-WRAMP Rooted Frequency: Measure of long-term changes. USFS has an established 25-year dataset with 13 plots in Pine Creek.



SM-WRAMP General Vegetation: 56 plots placed where change is expected to occur.

Logan Springs 2023 Plant Composition Monitoring
Combined Ranking for all Vegetation Plots



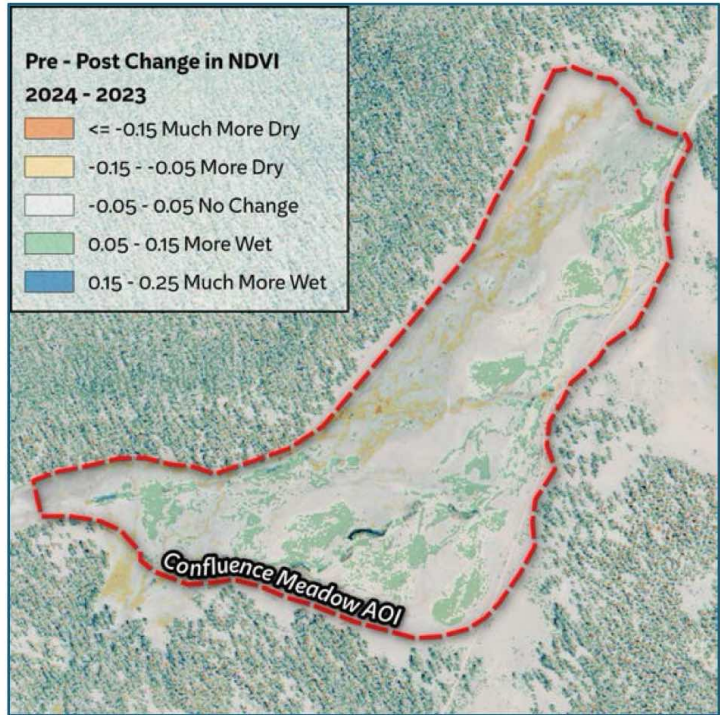
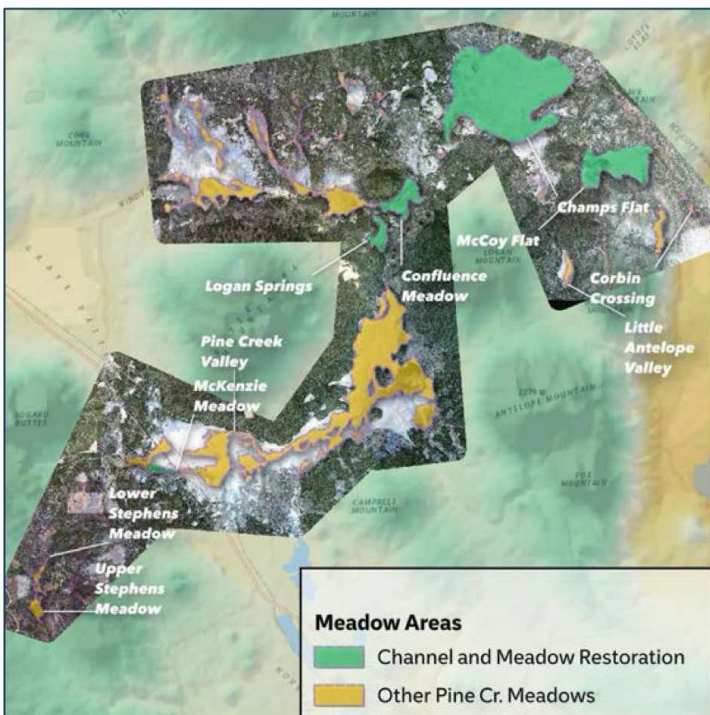
Pre-restoration surveys show that hydric species are concentrated in the main channel and active floodplain. Remnant deep-rooted wetland plants are found in the disconnected upper floodplain.

This vegetation suggests that once restoration reconnects system hydrology, wetland species should dominate the project area.

Vegetation - Large-Scale Response

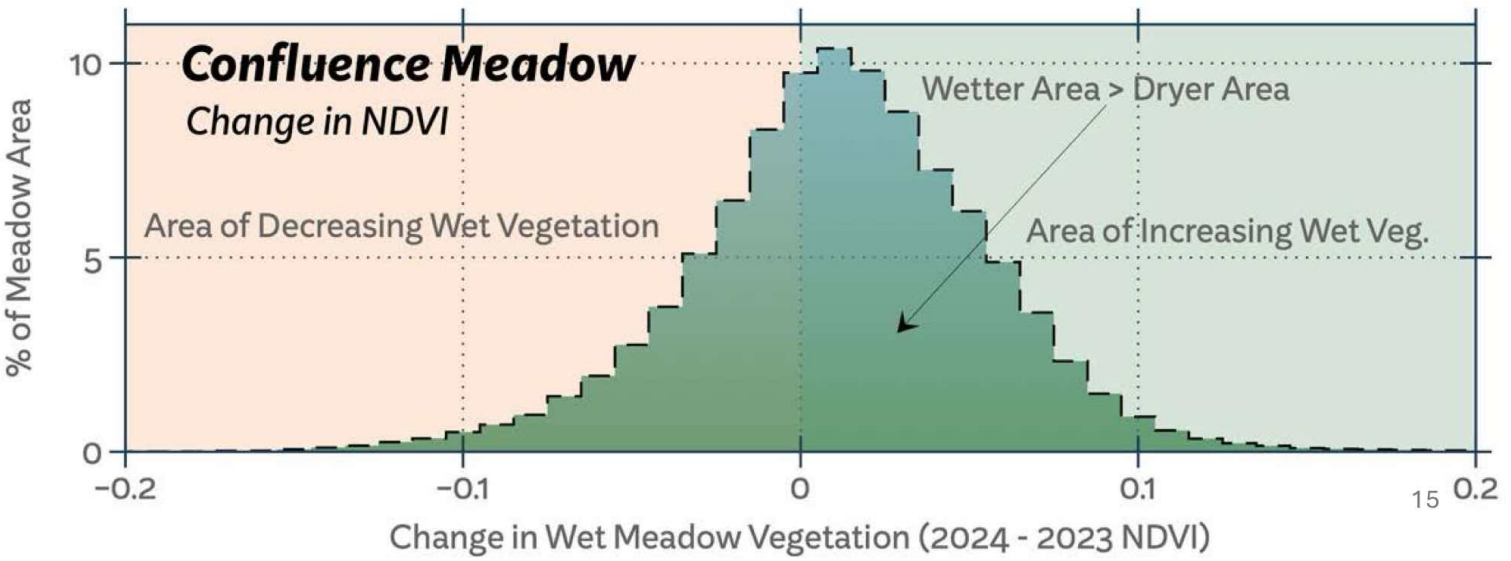
REMOTELY-SENSED ANALYSIS OF VEGETATION AT THE WATERSHED-SCALE

What	Satellite acquired multispectral imagery (visible and NIR) used to monitor changes in the area of wet meadow vegetation over time.
Who	TU restoration scientists in collaboration with Desert Research Institute.
Where	Imagery acquisitions have spanned all target restoration meadow areas (Confluence, Logan Springs, Champs Flat and McCoy Meadows) and other sensitive meadow areas within the Pine Creek watershed.
When	Repeat imagery acquisitions during late growing season timeframe have occurred annually 2023 – 2025. Additional imagery acquisitions are scheduled occur annually for up to 5 years post-restoration.



Extent of NDVI and visible imagery acquisitions from 2023, 2024 and 2025 encompassed all sensitive meadow areas identified in the Pine Creek Watershed.

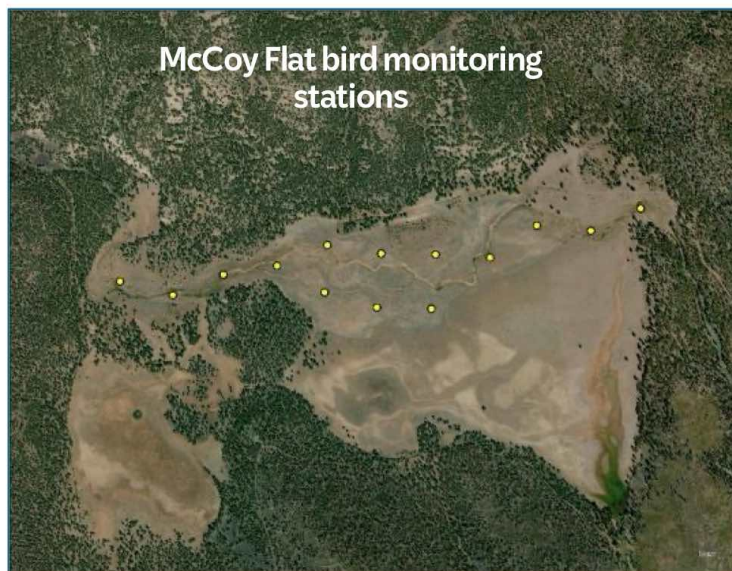
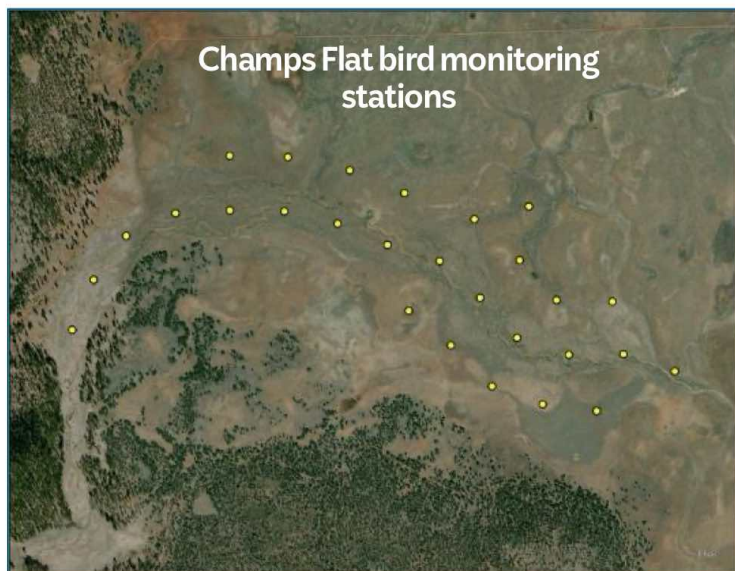
Analysis of the change in late season wet meadow area, Note changes to "More Wet" in borrow areas that received seeding and organic material additions in 2023.



Avian Response to Restoration

AVIAN COMMUNITIES & AVAILABLE SUITABLE HABITAT

What	Bird point counts and relative-style habitat/vegetation data
Who	Point Blue Conservation Science
Where	Within areas expected to be restored or converted to wetland. 28 survey stations at Champs Flat and 14 survey stations at McCoy Flat.
When	Pre-restoration surveys for breeding birds completed in late May & June 2025. Pre-restoration habitat surveys completed July & August 2025. Another round of pre-restoration bird surveys is scheduled for 2026.



Focal Species

In 2025, species richness for meadow focal species was 0 species/station at Champs Meadow and 0.14 species/station at McCoy Meadow. The restoration target is 2 species/station.

Transect	Year	Focal Species Richness	Variance	Standard Error	Sample Size
Upper Champs	2025	0	0	0	14
Lower Champs	2025	0	0	0	14
McCoy	2025	0.14	0.05	0.06	14

All Species

In 2025, species richness including all bird species was around 2.37 species/station at Champs Meadow and 1.86 species/station at McCoy Meadow. There is no restoration target for the species richness of all species.

Transect	Year	All Species Richness	Variance	Standard Error	Sample Size
Upper Champs	2025	2.11	0.62	0.21	14
Lower Champs	2025	2.64	0.71	0.23	14
McCoy	2025	1.86	0.75	0.23	14

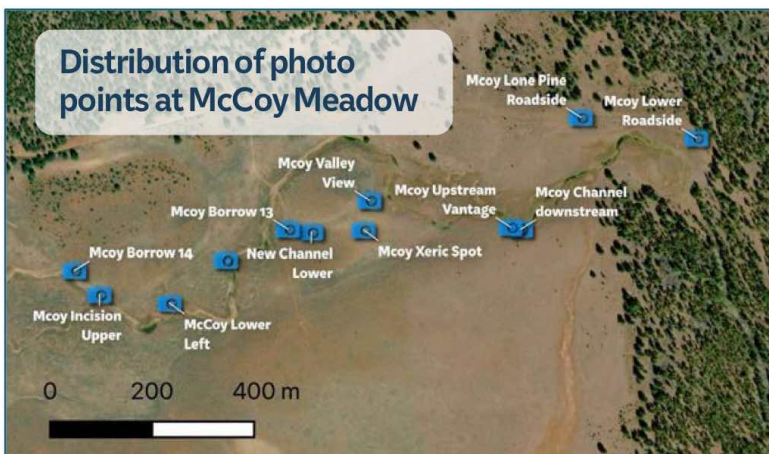
Repeat Photo Points

NETWORK OF PRE- AND POST-RESTORATION PHOTO POINTS

What	Network of 48 repeat photo locations established throughout the Pine Creek restoration meadows. Photo points include detailed description of their orientation and capture location
Who	TU monitoring and restoration scientists and contracted meadow and fish ecologists
Where	Established throughout the Logan Springs, Champs Flat and McCoy Meadows project areas.
When	Initial photo points in Logan Springs were established pre-restoration in 2024. Pre-restoration photo points within Champs Flat and McCoy were established in Summer 2025.



Repeat photos captured at Logan Springs in the Fall of 2024 just after restoration implementation and in Summer 2025, the first summer after meadow restoration implementation.



“Looking SW at borrow area 5. Stand at old channel margin river right. Looks toward valley right and upstream”

Example of a detailed photo point description which includes its orientation, subject, and vantage point, to ensure accurate photo recapture over time.

Photo point distributions, showing 12 sites within McCoy meadow established in 2025. These photo points will serve to document outcomes of the restoration treatments scheduled to be implemented in 2027

2. UNDERSTANDING EAGLE LAKE & ELRT

LIMNOLOGY, POPULATION DYNAMICS, AND INVASIVE SPECIES INTERACTIONS



Gill net sampling in Eagle Lake in 2025, University of Nevada – Reno.

INFORMING EAGLE LAKE RAINBOW TROUT CONSERVATION & MANAGEMENT

The University of Nevada Reno's Global Water Center, in partnership with CDFW and TU, is conducting a study in Eagle Lake and Pine Creek to investigate lake condition, fisheries and food web dynamics to increase the understanding of conditions influencing Eagle Lake Rainbow Trout life history and management.

Study Objective

Methods

Objective 1: Survey current Eagle Lake limnologic and water quality conditions to understand how current conditions compare to historic conditions and what it means for Eagle Lake Rainbow Trout population dynamics.

Lake clarity at depth (secchi depths), temperature and dissolved oxygen vertical profiles by season and lake location

Objective 2: Quantify the abundance, distribution, size and health of fishes across Eagle Lake including the three different lake basins by season.

Gill netting, fish tagging, angling surveys, Fulton's condition factor metrics

Objective 3: Evaluate the distribution and abundance of invasive brook trout in comparison to historical data.

Literature review, angling surveys

Understanding Eagle Lake Limnology

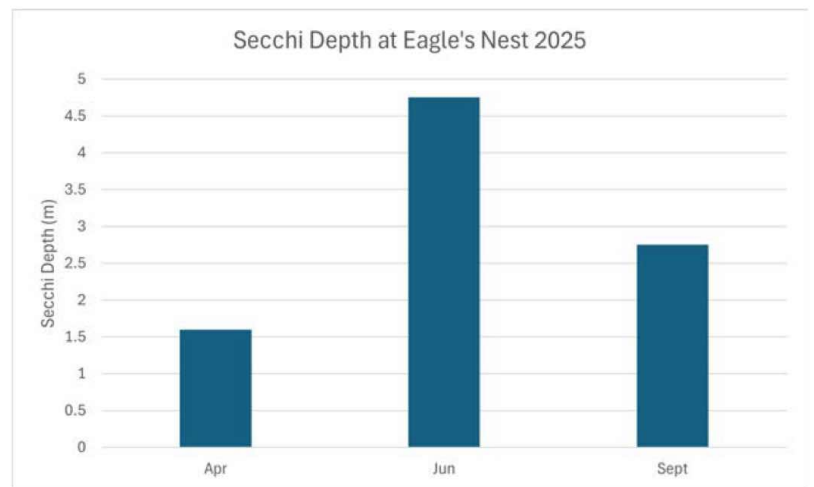
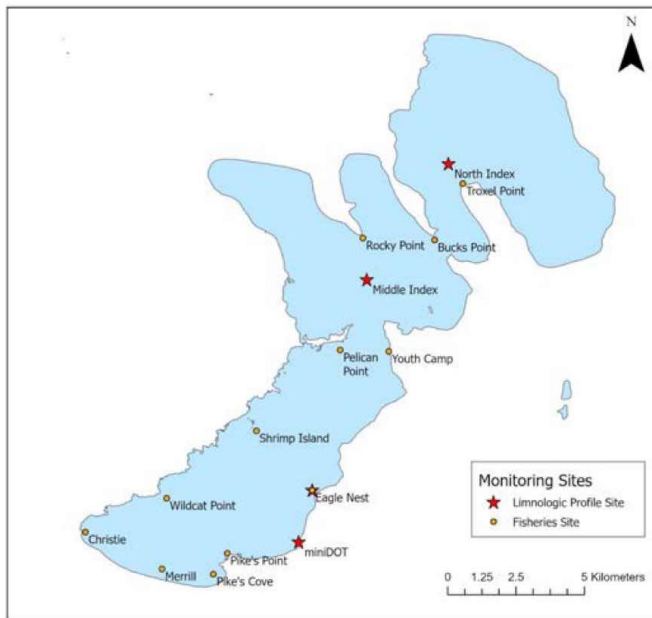
SURVEYED LAKE CONDITIONS RELATED TO FISHERIES

What Survey of Eagle Lake current limnologic conditions, such as lake clarity, and temperature, and dissolved oxygen depth profiles (to compare to historical conditions).

Who University of Nevada , Reno Global Water Center

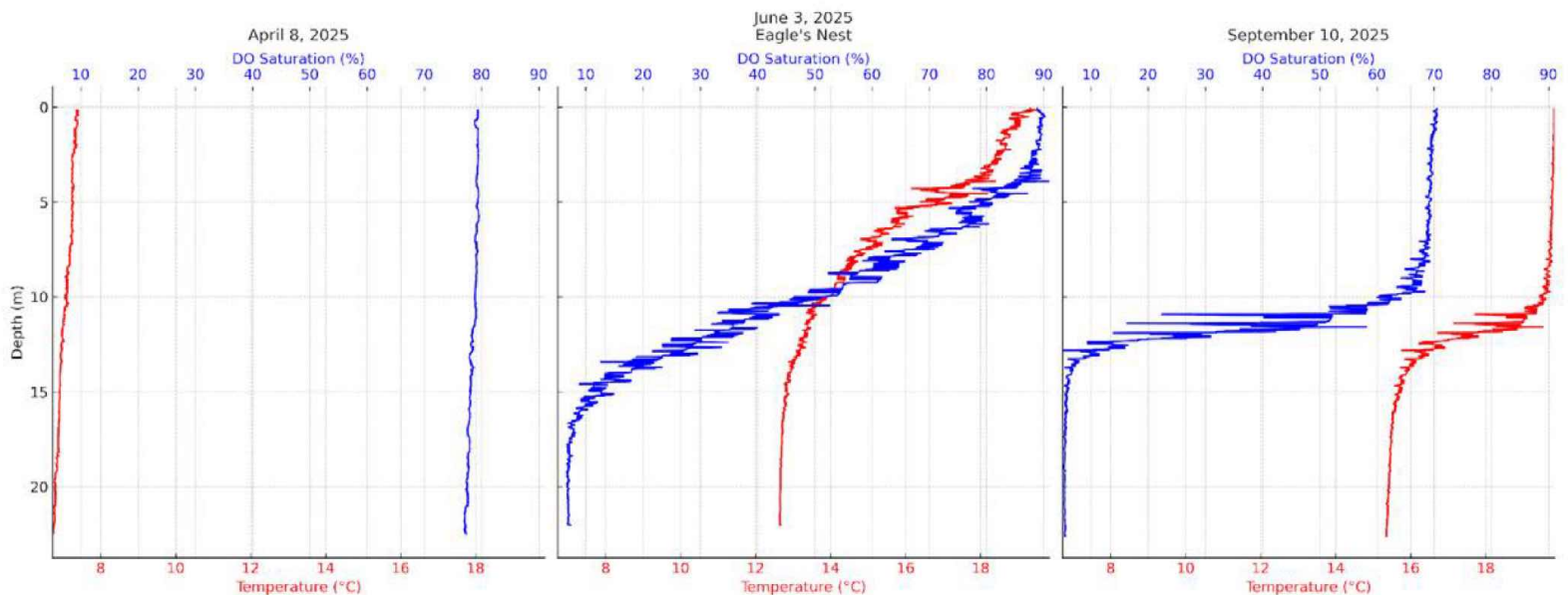
Where Three established limnologic profile sites based on maximum depth in each lake basin.

When Sampling occurred in April, June, and September 2025.



Water visibility depth in spring, early summer, and late summer 2025 recorded in the southern basin of Eagle Lake. Reveals that water clarity is deepest in mid-summer.

Limnologic profile sampling locations within Eagle Lake.



Water temperature and dissolved oxygen profile in spring, early and late summer 2025 recorded in the southern basin of Eagle Lake. Profiles indicate that fish can utilize all lake depths spring and early summer but may be constrained to depths above 14 m in the late summer.

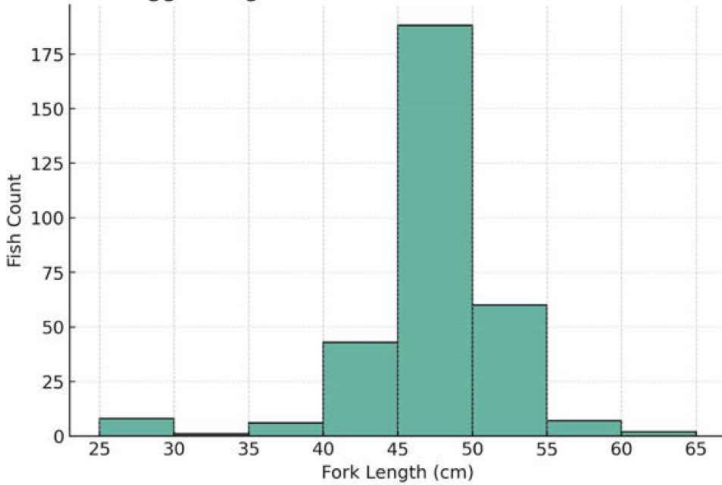
Understanding the Eagle Lake Fishery

MONITORING ELRT POPULATION DYNAMICS

What	Various methods (gill netting, tagging, angling) to quantify the abundance, size, distribution, and health of ELRT across the lake. Angling sampling efforts incorporated throughout Pine Creek.
Who	University of Nevada, Reno Global Water Center, and CDFW.
Where	Eleven lake fishery sample sites based on previous CDFW/UNR study sites and/or known recreational fishery locations. Angling surveys along Pine Creek.
When	2025 – variable depending on the method.

2025 FISH TAGGING EFFORTS

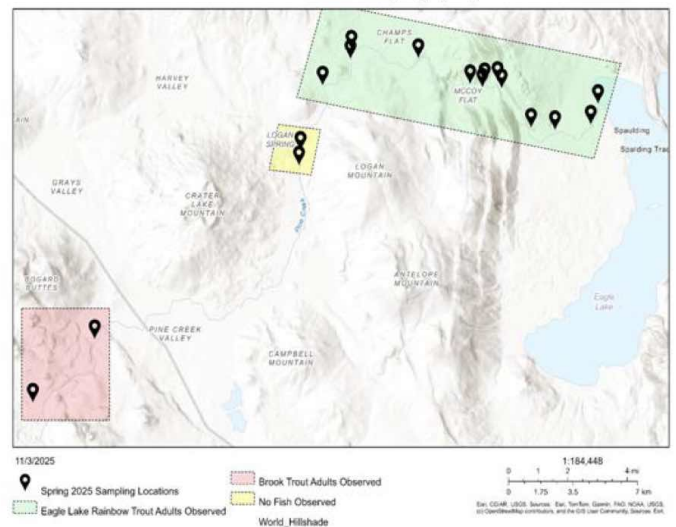
2025 Tagged Eagle Lake Rainbow Trout – Size Distribution



412 ELRT tagged during spring spawning collections, 24 fish were later recaptured.

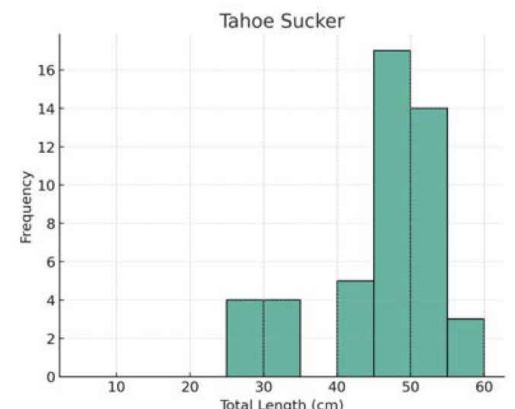
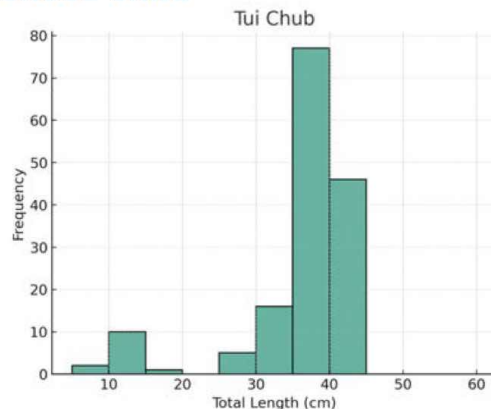
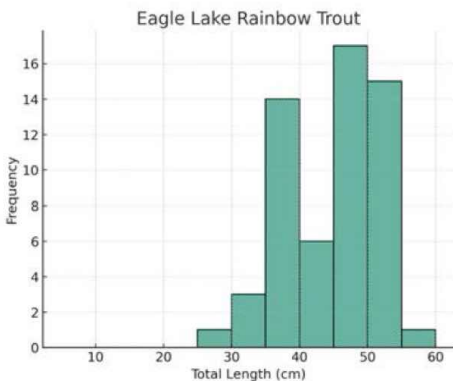
PINE CREEK ANGLING SAMPLE EFFORTS

Pine Creek Hook and Line Sampling Spring 2025



Angling efforts in Pine Creek, over a three-day period in May 2025. Adult ELRT were observed only in green-boxed area. Juvenile ELRT were observed along Pine Creek, including where Brook Trout were observed (red-boxed area). No fish were observed in the yellow-boxed area.

2025 GILL NETTING EFFORTS IN EAGLE LAKE



Gill netting efforts illustrating ELRT, Tui Chub and Tahoe Sucker abundance and size frequency. Catch was highly variable with most of the catch consisting of Tui Chub. This sampling demonstrates that the native fish assemblage of Eagle Lake remains intact.

3. UNDERSTANDING WATERSHED DYNAMICS

INTEGRATING HYDROLOGIC AND LAND-USE MODELLING TO UNDERSTAND HISTORIC AND FUTURE CONDITIONS WITHIN PINE CREEK AND EAGLE LAKE



MODEL 1 - SWAT+: SOIL AND WATER ASSESSMENT TOOL

Objective	Application
<p><i>Develop watershed scale model that describes the impacts of landscape characteristics, vegetation, land-use, climate processes on hydrologic dynamics in Pine Creek</i></p>	<p>Determine the relative importance of catchment processes to hydrologic processes within Pine Creek and Eagle Lake</p>
<p><i>Reconstruct historic flow patterns throughout the Pine Creek watershed.</i></p>	<p>Provides a baseline for quantifying how future management changes or climate conditions might influence streamflow and ELRBT habitat suitability in Pine Creek</p>
<p><i>Describe the relationship between hydrologic dynamics in Pine Creek and Eagle Lake</i></p>	<p>Inform management decisions that determine habitat suitability within Eagle Lake and Pine Creek</p>

RHESSYS MODEL: REGIONAL HYDRO-ECOLOGICAL SIMULATION SYSTEM

Objective	Application
<p><i>Assess and simulate the influence that vegetation density and forest canopy cover has on the magnitude and direction of streamflow in the Pine Creek Watershed</i></p>	<p>Assess how future forest management practices and climate scenarios might impact surface flow availability and habitat suitability for Eagle Lake Rainbow Trout in Pine Creek</p>

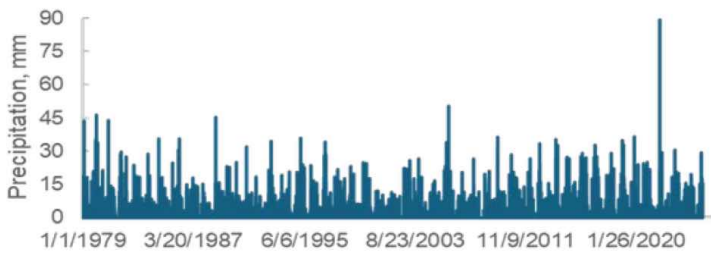
Understanding Watershed Dynamics: Climatic, Vegetation Management & Hydrologic Modeling

What	Modelling efforts that incorporate landscape, hydrologic, and climate datasets to understand current conditions and model future potential outcomes for Pine Creek and Eagle Lake
Who	Professors and students at the University of Nevada Tahoe Institute for Global Sustainability
When	Modelling efforts are ongoing and will continue into 2026

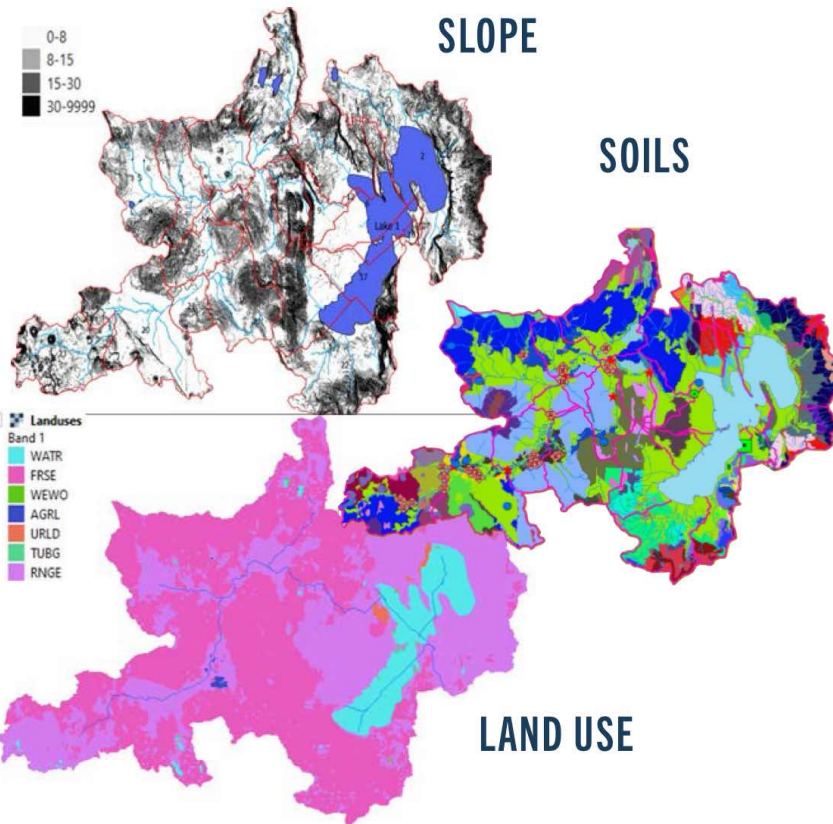
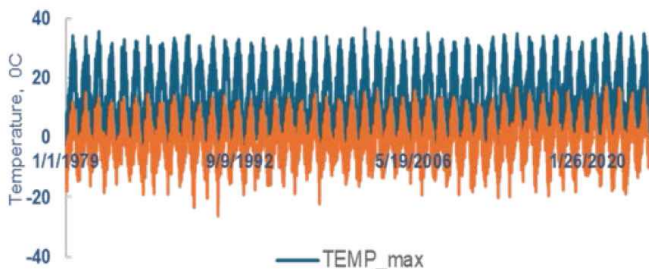
SWAT MODEL INPUTS: CLIMATE, TOPOGRAPHY, LAND USE, SOILS

The SWAT model offers an approach to model historic conditions and project future conditions within Pine Creek and Eagle Lake according to management and climate futures.

PRECIPITATION

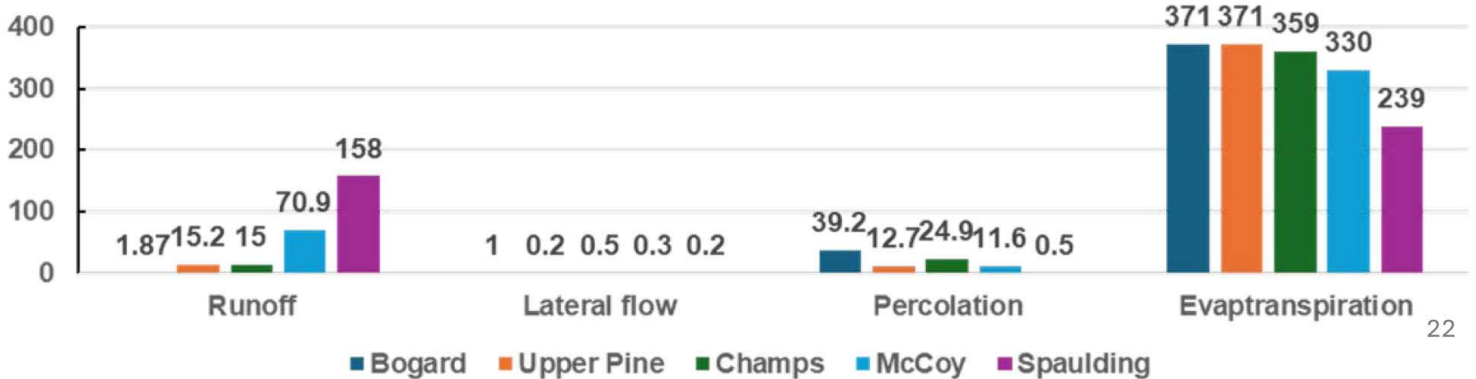


TEMPERATURE



SWAT OUTPUT: SUBBASIN WATER BALANCE ESTIMATES

SWAT water balance estimates demonstrate dominant loss of water in the middle basin is due to evapotranspiration and percolation. These processes lead to low and intermittent surface flow in Pine Creek.

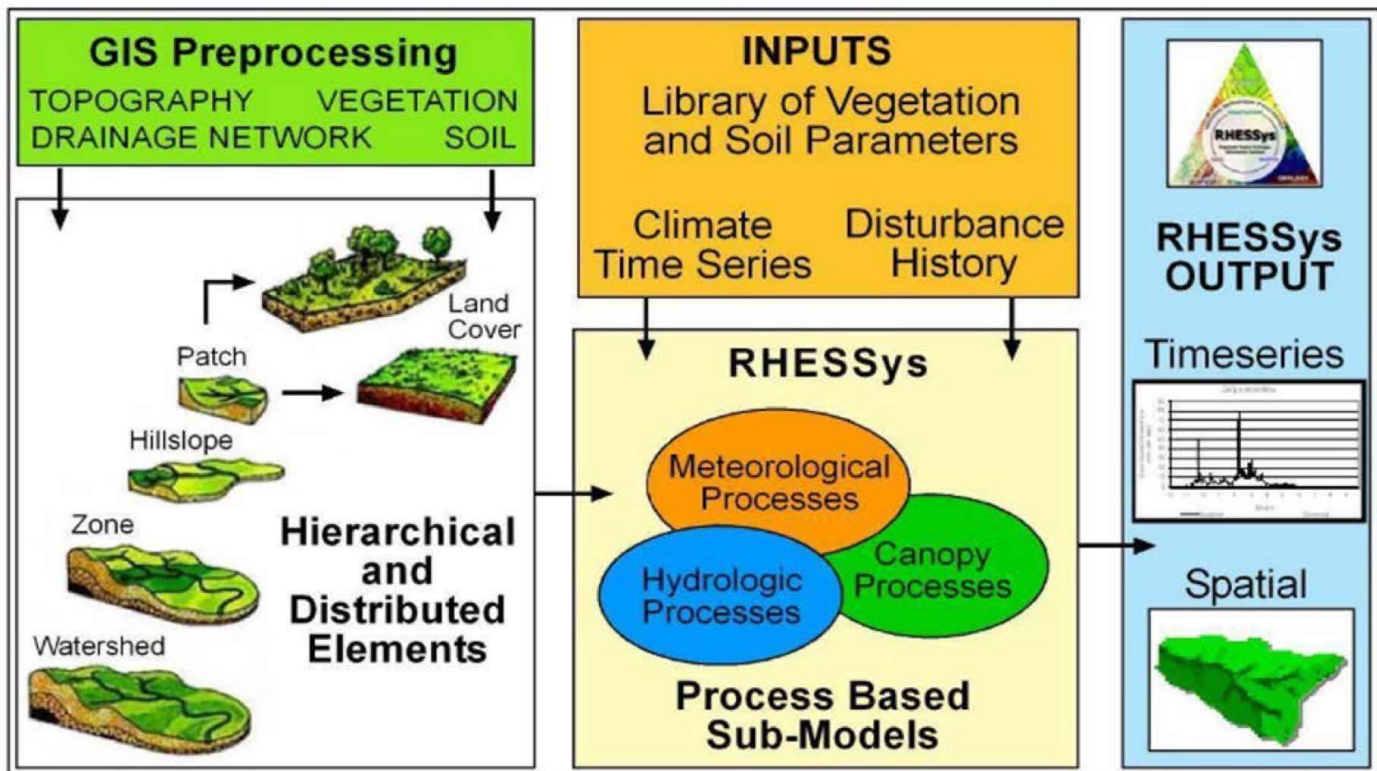


Understanding Watershed Dynamics: Climatic, Vegetation Management & Hydrologic Modeling

What	Modelling efforts that incorporate landscape, hydrologic, and climate datasets to understand current conditions and model future potential outcomes for Pine Creek and Eagle Lake
Who	Professors and students at the University of Nevada Tahoe Institute for Global Sustainability
When	Modelling efforts are ongoing and will continue into 2026

RHESSYS MODEL: REGIONAL HYDRO-ECOLOGICAL SIMULATION SYSTEM

Designed to simulate interactions among vegetation, climate, hydrology and fire. This model will be used to understand how upland vegetation disturbances propagate downstream into water availability under different climate and forest management scenarios.



Forest Management Scenarios

- No thinning
- Light thinning
- Moderate thinning

Climate Scenarios

- Current Climate
- Drought

PRELIMINARY MODEL PROJECTIONS

Initial model projections under different climate and management scenarios show a range of outcomes for Pine Creek that include decreased interannual variability in precipitation and warmer average air temperatures.

Pine Creek and Eagle Lake Recovery

PARTNERS IN PINE CREEK AND EAGLE LAKE ECOSYSTEM RECOVERY



Post-restoration image of the highly connected floodplain within Confluence Meadow where meadow restoration occurred in 2022. Image captured May 2025

Individuals, organizations, and agencies partnering for recovery in Pine Creek:

American Rivers

C.S. Ecological Surveys and Assessments

California Department of Fish and Wildlife

California Wildlife Conservation Board

Desert Research Institute

Eagle Lake Guardians

Forest Creek Restoration

Honey Lake Valley RCD

Point Blue Conservation Science

Plumas Corp

Sabra Purdy Ecological Restoration

Sierra Meadows Partnership

Springs Stewardship Institute

Trout Unlimited

University of Nevada Reno

US Forest Service

Waterways Consulting

Wildlife Resource Consultants

